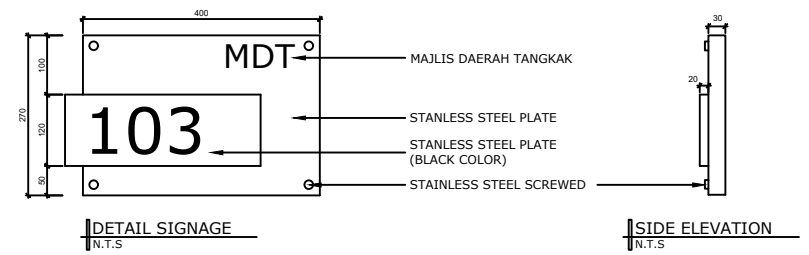




CADANGAN ILUSTRASI REKABENTUK NAMA TAMAN
N.T.S

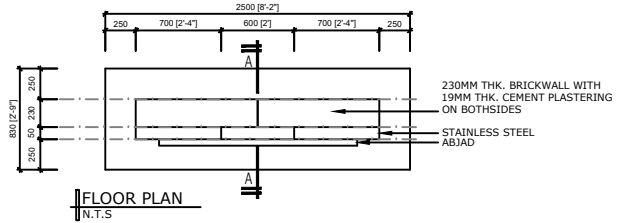


CADANGAN REKABENTUK NO. RUMAH
N.T.S

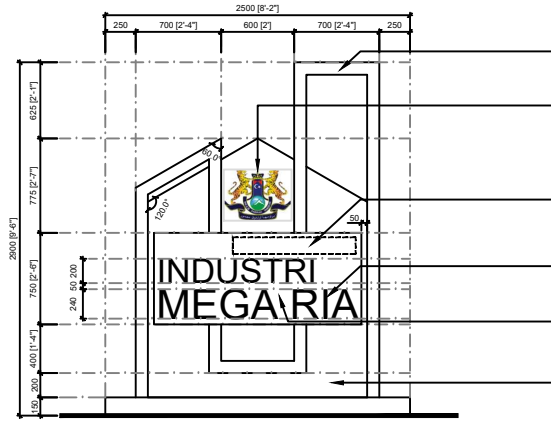


DETAIL SIGNAGE
N.T.S

SIDE ELEVATION
N.T.S

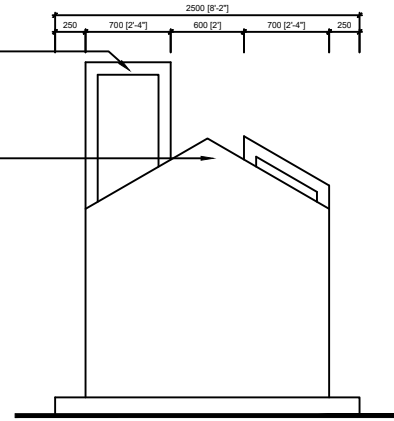


FLOOR PLAN
N.T.S

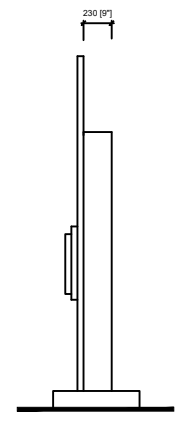


FRONT ELEVATION
N.T.S

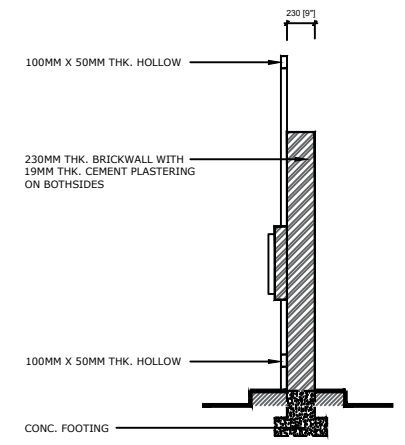
- STEEL (100mm X 50mm)**
COLOR : YELLOW
MATERIAL : STAINLESS STEEL
- LOGO (500mm X 400mm)**
LOGO : MAJLIS DAERAH TANGKAK (2D)
MATERIAL : ACRYLIC
- 230MM THK. BRICKWALL WITH 19MM THK. CEMENT PLASTERING ON BOTHSIDES
- RUANGAN TULISAN JAWI UNTUK NAMA KOMERSIAL/ INDUSTRI**
- DETAIL ABJAD**
FONT : ARIAL (2D)
MATERIAL : STAINLESS STEEL
COLOR : WHITE
- DETAIL FINISHING**
MATERIAL : PABLEWASH
COLOR : GRAY
- DETAIL FINISHING**
MATERIAL : CERAMIC STONE
COLOR : WHITE CREAM



REAR ELEVATION
N.T.S



SIDE ELEVATION
N.T.S



SECTION A
N.T.S



PROJEK :
CADANGAN PENYEDIAAN NAMA TAMAN, JALAN DAN PLAT NOMBOR BAGI PEMBANGUNAN KOMERSIAL DAN INDUSTRI
 Version 2021